



Designed for Success

Simulation with Panasas Storage

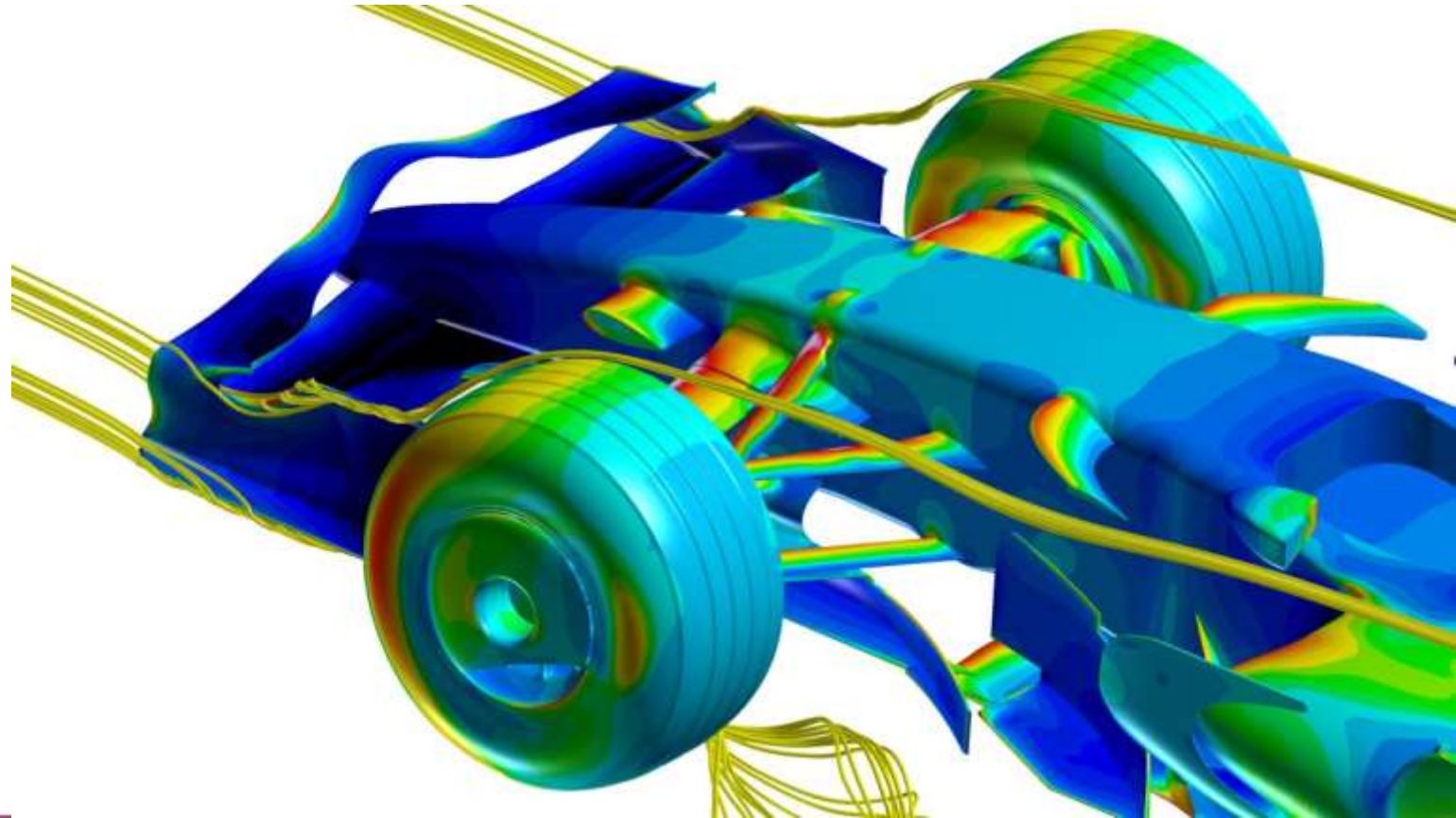
Dale Brantly
Director, Worldwide Systems Engineering

September 5, 2018 - HPC User Forum, Dearborn, MI

Siemens (CD-Adapco) Star-CCM

Ansys Fluent

OpenFoam



Some of our Manufacturing Customers



High Performance for Mixed Workflows Out of the Box

Panasas storage with its large cache (~1TB cache per 1 PB storage) provides the ability to:

- Prefetch data from the hard drives
- Efficiently organize data prior to being written to disk

The ActiveStor® Solution

- Large SSDs for efficient placement of metadata and small files
- Hard disks for large files

Management Simplicity, Lower Costs

- Integrated hardware and software appliance design
- No need for highly trained storage administrators
- Customer maintained hardware

Enterprise-Grade Reliability and Availability

- Fully Redundant HW
- Intelligent SW monitoring

True Linear Scalability

- Seamless linear scaling by adding Storage & Director nodes
- Network resources and bandwidth scale up with the system
- No performance “brick wall” or need for islands of storage
- Applies to all access protocols – DirectFlow®, NFS, and SMB

Our customers are achieving great results across
a wide range of use cases

Current Use Cases



Manufacturing

- CFD Simulation & Analysis
- FEA
- EDA



University

- Climate Modeling
- Materials Science
- High Energy Physics
- Computational Mathematics



Government

- Climate Modeling
- Defense
- Intelligence
- Financial Modeling



Life Sciences

- Genomic Sequencing
- Molecular Microscopy/Imaging
- Bioinformatics
- Computational Chemistry



Media & Entertainment

- VFX/Rendering
- Active Archive
- Transcode

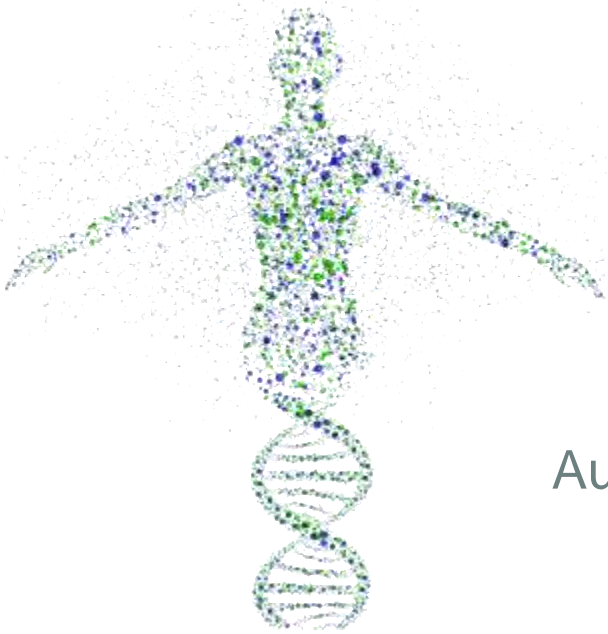


Energy

- Seismic Processing
- Reservoir Simulation
- Interpretation & Analysis
- Renewables (Wind, Bio Fuel)

And Ready For Emerging Use Cases & Technologies

Precision Medicine



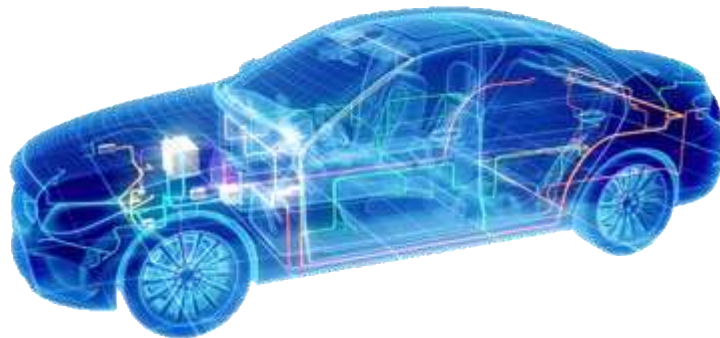
Deep Learning



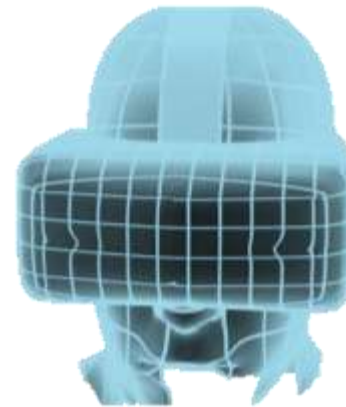
Artificial Intelligence



Autonomous Vehicles



Virtual Reality





**Fast, Faster, Fastest.
Unveiling the new ActiveStor.**



Booth 1613, Hall D

A perspective view of a row of Panadas server racks. The racks are dark grey with perforated front panels. The Panadas logo is visible on the top of each rack and on a larger panel at the top of the row. The background is dark, making the server racks stand out.

panadas
Beyond Storage

Future Ready Starts Now