

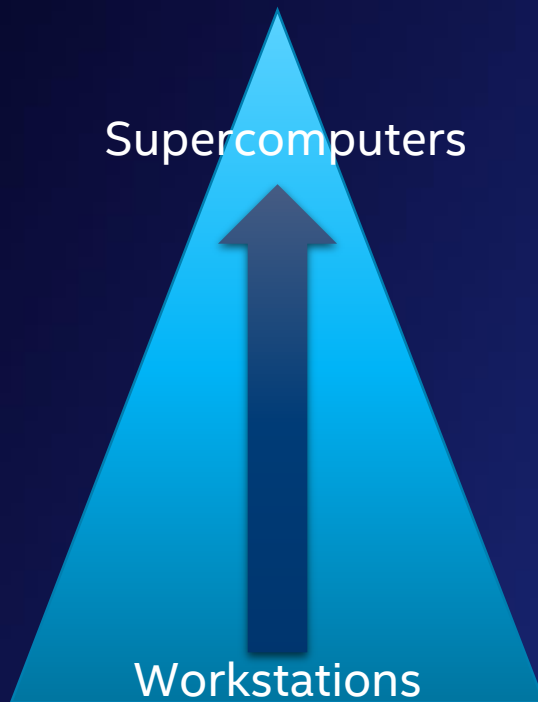
INTEL UPDATE IDC USER FORUM

MAY 2017 SANTA FE, NM



TECHNICAL COMPUTING INITIATIVE @ INTEL

VERTICAL END CUSTOMER FOCUS

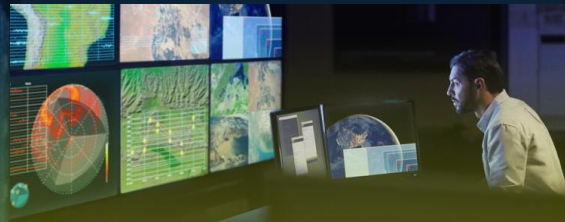
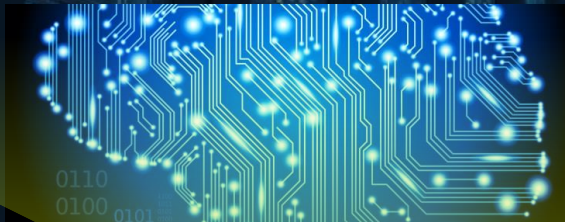


MANY WORKLOADS | ONE ARCHITECTURAL FRAMEWORK

**MACHINE
LEARNING**

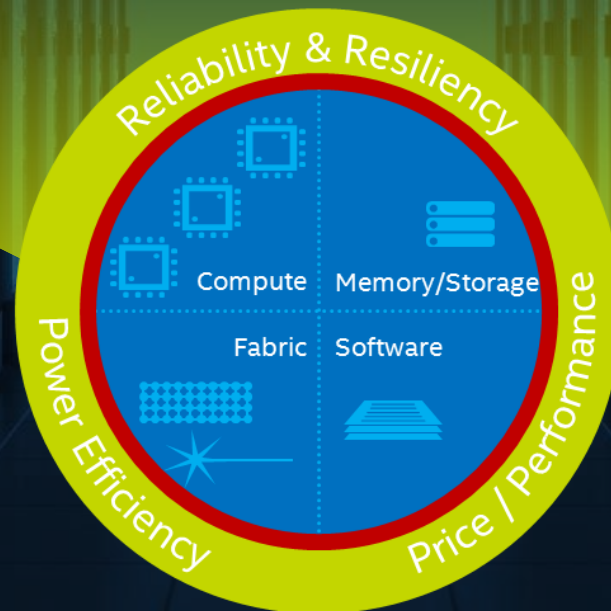
**MODELING
& SIMULATION**

**HIGH PERFORMANCE
DATA ANALYTICS**



**Small Clusters Through
Supercomputers**

**Compute and
Data-Centric**

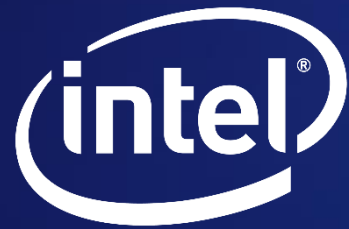


**Standards-Based
Programmability**

**On-Premise and
Cloud-Based**

INTEL® SCALABLE SYSTEM FRAMEWORK





WE WANT TO HEAR FROM YOU
PATRICIA.DAMKROGER@INTEL.COM

