



HPC User Forum 2023

Innovative Technologies Panel

PENGUIN[™]
SOLUTIONS 

TODAY'S PRESENTER

Mark Seamans

Vice President, Hybrid Cloud HPC/AI Solutions
Penguin Solutions



End-to-End HPC and AI Solution Capabilities

Penguin Solutions *designs, builds, deploys, and manages* HPC, AI Factories, and accelerated computing infrastructure at scale.

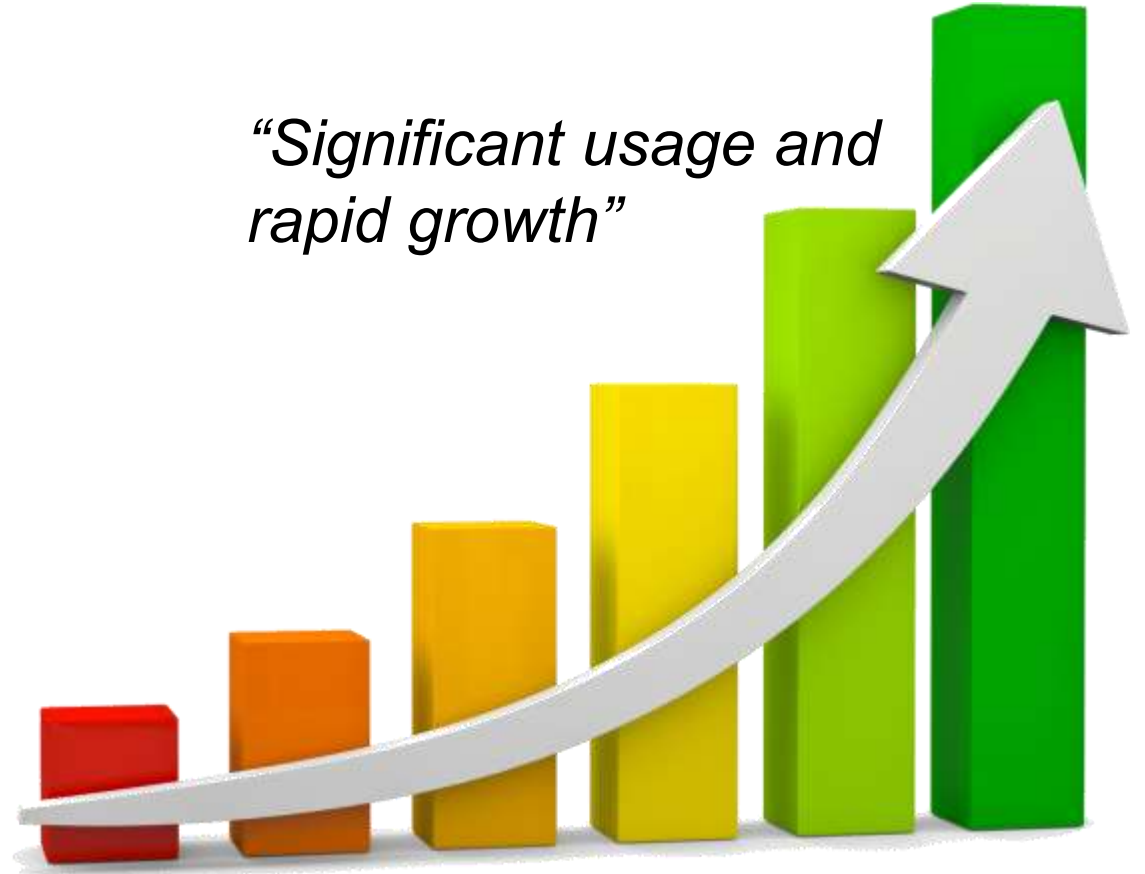
- **Tailored:** We deliver highly tuned solutions that significantly improve results.
- **Proven:** We accelerate access to stable and highly productive solutions.
- **Innovative:** We creatively incorporate and combine the best elements and technologies.



Growth in the Cloud for HPC & AI

- Hybrid-cloud models enable elastic “bursting” of workloads
- New HPC & AI users often start in the cloud for their first workloads
- Cloud-based systems provide access to new CPUs & GPUs

“Significant usage and rapid growth”



Managing Cost in Cloud Deployments

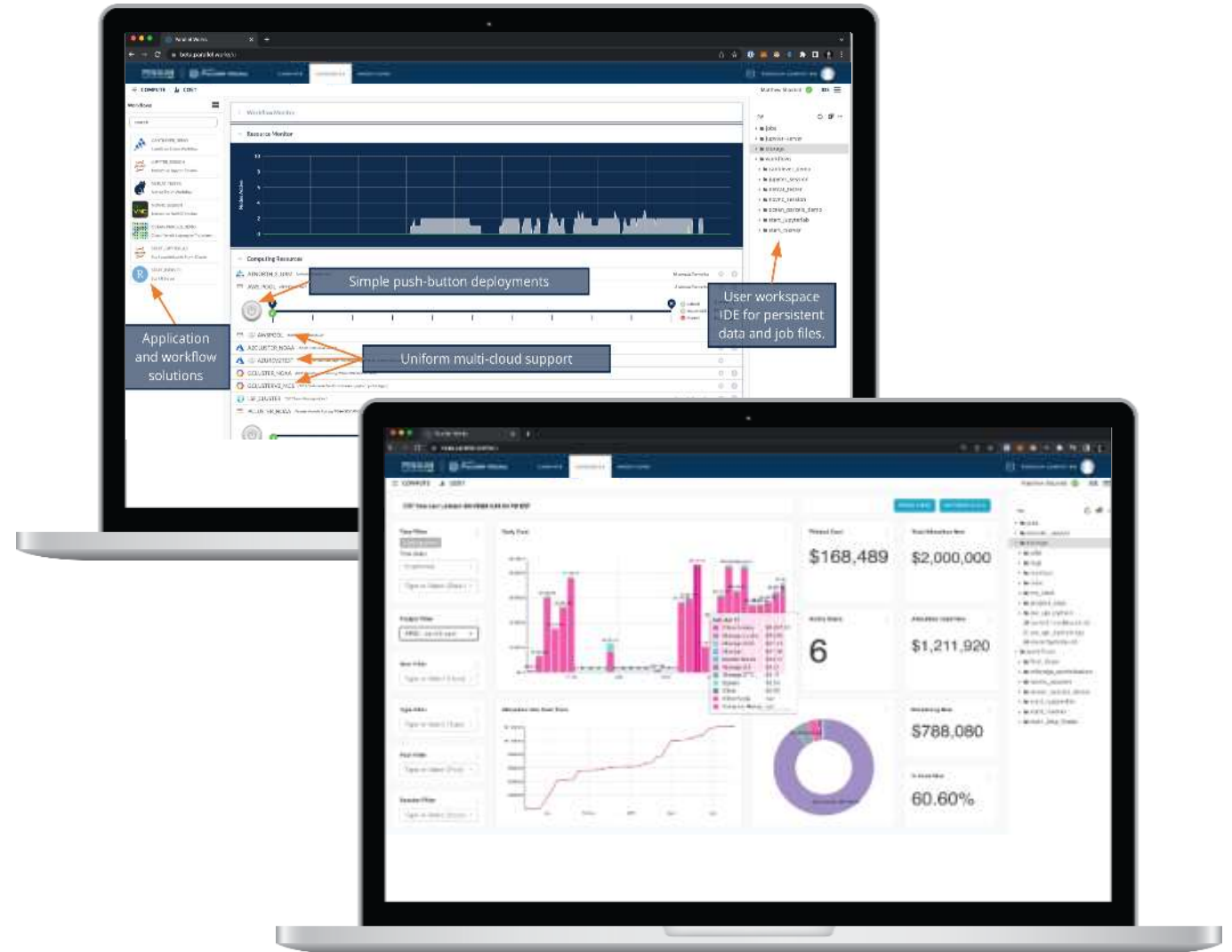
- There are many best practices and offers available to drive down the cost of cloud HPC
- Key requirements:
 - Understand potential operating costs during system design
 - Leverage cost reduction techniques for production use cases
 - Implement guardrails and reporting to control actual costs during system deployment



Scyld Cloud Central

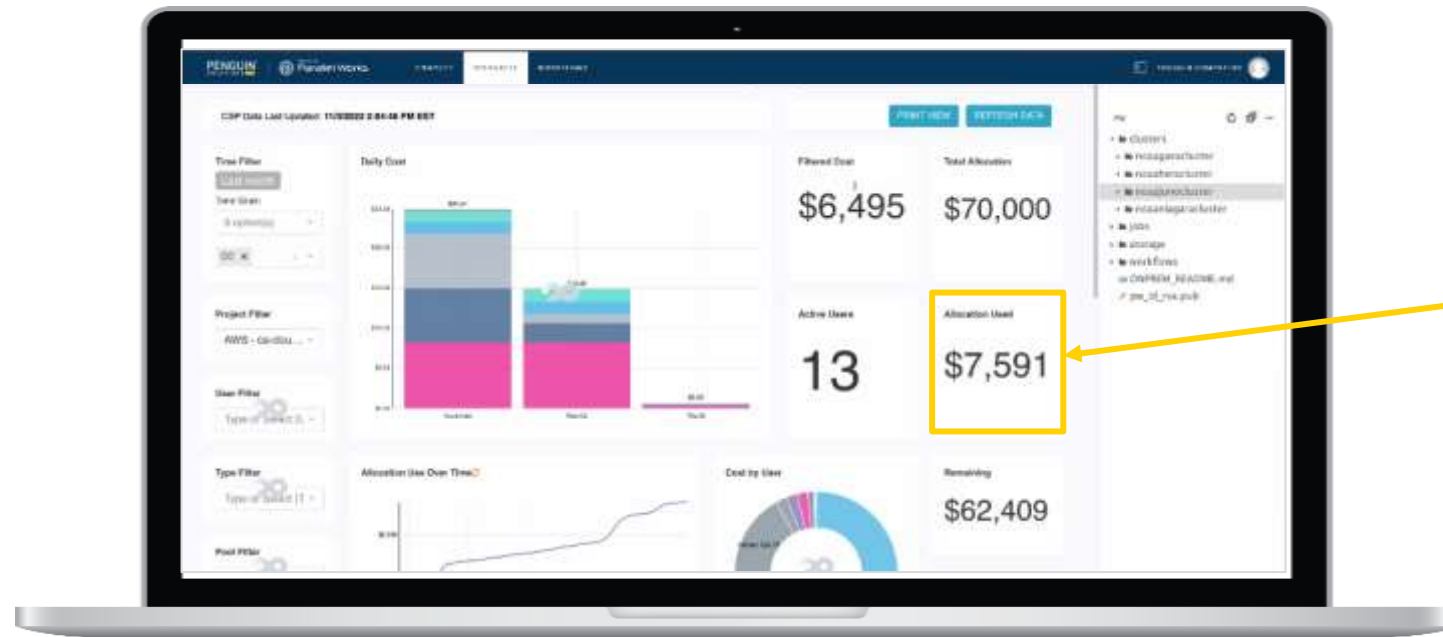
Cost-managed Cloud HPC

- **Single pane of glass** for management across multiple clouds
- **Hybrid** capability to burst from on-premise to cloud as needed
- Near-real-time **cost management**
- **AI / ML integration** for various application domains
- Ability to **tune cost-performance** for clusters 'on the fly'
- **Simple** push button interface



End-to-End Cloud Cost Management, Tracking, and Reporting

Integrated platform for both technical cluster implementation and business management



Reporting and Management

- Multi-cloud billing analytics, cost management and charge-back reporting to track spend by user, group and project
- Ability to setup guardrails to avoid budget over-runs



Thank You

WE APPRECIATE YOUR TIME